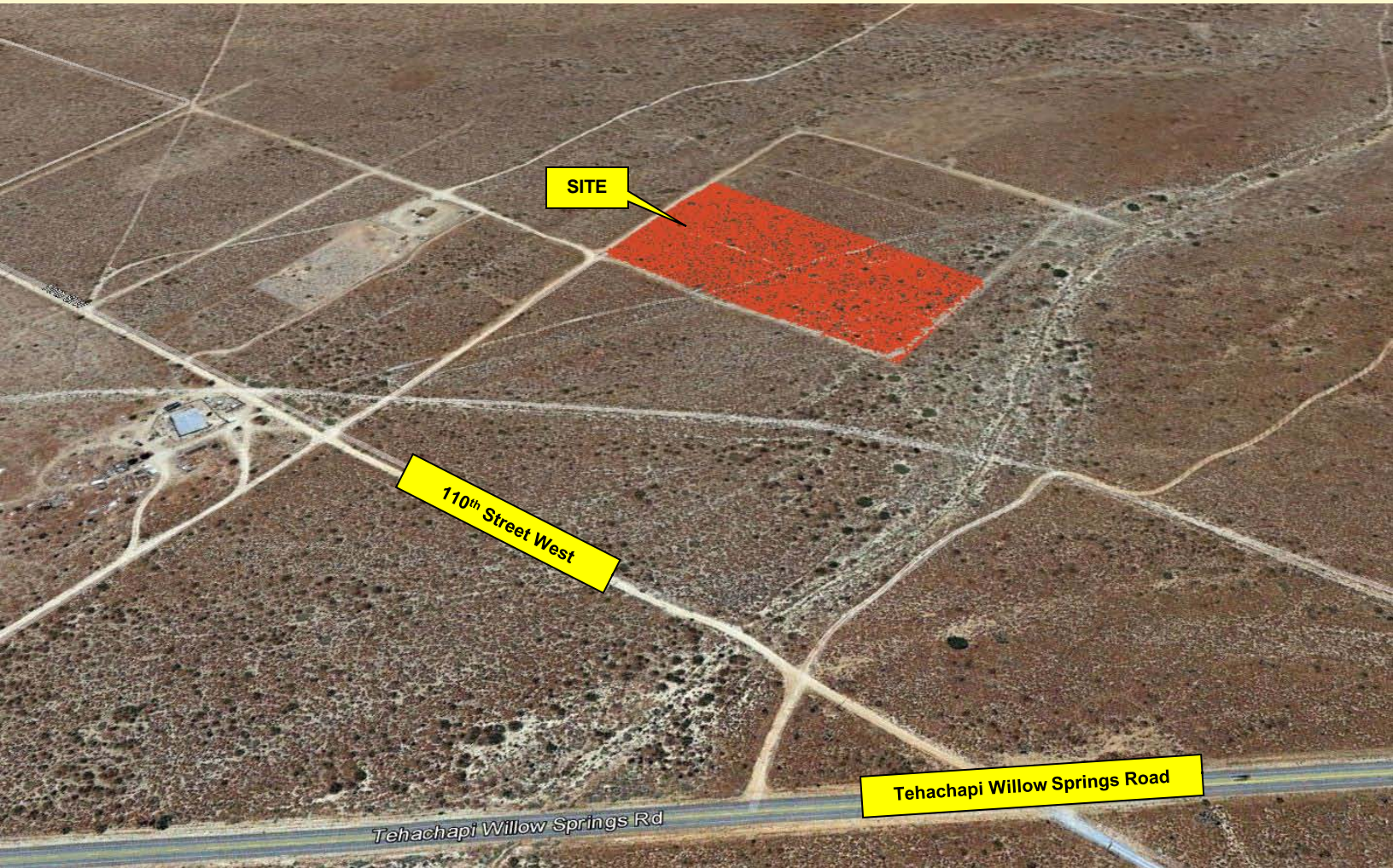


# 5 acres – Rosamond, California



## Willow Springs Road & 112<sup>th</sup> St. W., Rosamond, CA

- Total Asking Price - \$19,000
- Two 2.59 Acre Parcels
- Close to Utilities
- Zoned Agricultural
- APNs: 474-081-26 & 27

For More Information, Please Contact:

Ron Halcrow | 661.373.3221

[halcrow@coldwellbanker.com](mailto:halcrow@coldwellbanker.com)

DRE Lic# 00926296

**Coldwell Banker Commercial**  
**A Hartwig Company**  
43912 20<sup>th</sup> St. W.  
Lancaster, CA 93534

661.286.1116



**Coldwell Banker Commercial®**

The information contained herein was obtained from third parties, and it has not been independently verified by the real estate brokers. Buyers/tenants should have the experts of their choice inspect the property and verify all information. Real estate brokers are not qualified to act as or select experts with respect to legal, tax, environment, building construction, soils-drainage or other such matters.